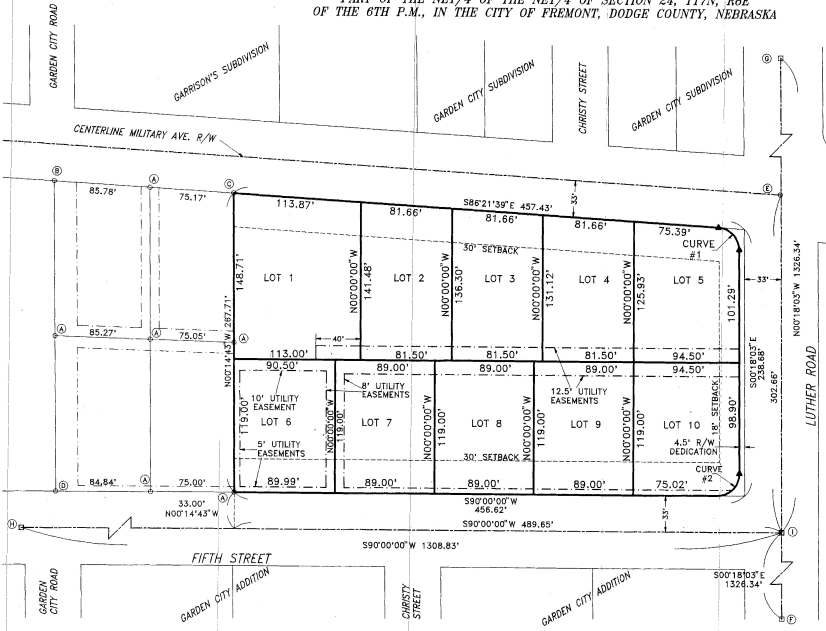


Plat # 474 FILED 0330 98 JAN 21 PM 12:03 Carol Hoover REGISTER OF DEEDS DODGE COUNTY, NE

COMPUTER INDEX FILE # 25.00

FINAL PLAT OF BARTELS SUBDIVISION PART OF THE NE 1/4 OF THE NE 1/4 OF SECTION 24, T17N, R8E OF THE 6TH P.M., IN THE CITY OF FREMONT, DODGE COUNTY, NEBRASKA



SCALE: 1"=60' DAY ACRES ADDITION

LEGEND P PLATTED DISTANCE R RECORDED DISTANCE M MEASURED DISTANCE C CALCULATED DISTANCE D SUBDIVISIONAL CORNER O FOUND CORNER SET 6' X 3' CONC. MONUMENT WITH 1/2" REBAR CORE

NOTE: ALL LOT CORNERS SET WITH 3/4" X 2" REBAR UNLESS OTHERWISE SHOWN

CURVE DATA CURVE #1 CURVE #2 R = 20.00' R = 20.00' T = 18.67' T = 20.11' L = 30.04' L = 31.92' Δ = 89°03'36" Δ = 90°18'03" LC = 27.30' LC = 28.36'

CORNER INFORMATION A FOUND 3/4" REBAR B FOUND NAIL IN EAST EDGE OF ASPHALT DRIVE ABOVE 5/8" OPEN TOP PIPE, 0.09' N OF TRUE CORNER C FOUND 5/8" OPEN TOP PIPE, 0.08' NORTH OF TRUE CORNER D FOUND 5/8" OPEN TOP PIPE, 0.20' NORTH OF TRUE CORNER

CORNER INFORMATION E 0.67' WEST OF EAST LINE OF NE 1/4 SEC. 24-17-8 ON CENTERLINE OF MILITARY AVE. FOUND 'X' IN CONCRETE 7.92' NNW TO PUNCHED 'X' IN MANHOLE RIM 13.40' WSW TO PUNCHED 'X' IN MANHOLE RIM 40.02' SW TO PUNCHED 'X' IN MANHOLE RIM 37.49' NW TO 'X' NAILS ON POWER POLE 71.26' SSE TP 'X' NAILS ON POWER POLE

F SE COR. NE 1/4 SEC. 24-17-8 FOUND STARBIT HOLE IN CONCRETE 48.01' NW TO NAIL & DISK ON POWER POLE 38.97' SW TO NAIL & DISK ON POWER POLE 95.13' SE TO NAIL & DISK ON POWER POLE 58.04' SSW TO TOP CENTER FIRE HYDRANT

G NE COR. SEC. 24-17-8 FOUND NAIL IN CENTERLINE OF PAVEMENT 28.49' NE TO NAIL ON POWER POLE 32.59' WNW TO NAIL ON POWER POLE 42.40' SE TO NAIL ON POWER POLE 5.26' S TO CENTER OF WATER VALVE

H SW COR. NE 1/4 SEC. 24-17-8 FOUND NAIL & WASHER IN CENTERLINE OF HOWARD ST. PAVEMENT 13.51' N TO CENTERLINE OF 5TH ST. PAVEMENT 44.88' NNW TO 'X' NAILS IN WOOD LIGHT POLE 25.10' SW TO 'X' ON N POST OF WEST CULVERT HANDRAIL 52.79' SSE TO W ANCHOR POST OF STEEL LIGHT POLE 22.27' SE TO 'X' ON N POST OF EAST CULVERT HANDRAIL

I SE COR. NE 1/4 SEC. 24-17-8 FOUND 5/8" HOLE & CHISELED 'X' IN PAVEMENT 21.33' NE TO 'X' NAILS IN POWER POLE 75.49' NNW TO 'X' NAILS IN POWER POLE 30.74' SW TO 'X' NAILS IN POWER POLE 5.92' W TO CENTERLINE OF LUTHER ROAD PAVING 12.75' N TO CENTERLINE OF 5TH STREET PAVING

DEDICATION KNOW ALL MEN BY THESE PRESENTS, THOMAS E. BARTELS, NANCY K. BARTELS, ABEL LIMON, JR. AND LETICIA LIMON, OWNERS OF THE TRACT OF LAND SHOWN AND DESCRIBED HEREON, HAVE CAUSED THE SAME TO BE DIVIDED INTO LOTS AND BLOCKS, NUMBERED AS SHOWN.

WE HEREBY GRANT TO THE CITY OF FREMONT, ANY PUBLIC OR PRIVATE UTILITY COMPANY, AND FOR THE USE OF ABUTTING PROPERTY OWNERS, PERPETUAL EASEMENTS AT THE LOCATION AND WIDTHS SHOWN FOR THE SOLE PURPOSE OF CONSTRUCTION AND MAINTENANCE OF UTILITY LINES AND PIPES AND DRAINAGE FACILITIES. NO PERMANENT BUILDING OR RETAINING WALLS SHALL BE PLACED IN THE ABOVE DESCRIBED EASEMENT WAYS, BUT THE SAME MAY BE USED FOR GARDENS, LANDSCAPING AND OTHER PURPOSES THAT DO NOT THEN OR LATER INTERFERE WITH THE AFORESAID USES OR RIGHTS HEREIN GRANTED.

THOMAS E. BARTELS NANCY K. BARTELS ABEL LIMON, JR. LETICIA LIMON

PLANNING COMMISSION APPROVAL ON THIS 15th DAY OF DECEMBER, A.D. 1997, THIS PLAT OF BARTELS SUBDIVISION WAS APPROVED AND ACCEPTED BY THE PLANNING COMMISSION OF THE CITY OF FREMONT, DODGE COUNTY, NEBRASKA.

CHAIR

CITY COUNCIL ACCEPTANCE ON THIS 30th DAY OF DECEMBER, A.D. 1997, THIS PLAT OF BARTELS SUBDIVISION WAS APPROVED AND ACCEPTED BY RESOLUTION OF THE CITY COUNCIL OF THE CITY OF FREMONT, DODGE COUNTY, NEBRASKA.

MAYOR DEPUTY CLERK

LEGAL DESCRIPTION A PARCEL OF LAND LOCATED IN THE NE 1/4, NE 1/4 OF SECTION 24, TOWNSHIP 17 NORTH, RANGE 8 EAST OF THE 6TH P.M., IN THE CITY OF FREMONT, DODGE COUNTY, NEBRASKA, MORE PARTICULARLY DESCRIBED AS FOLLOWS: COMMENCING AT THE SOUTHEAST CORNER OF SAID NE 1/4, NE 1/4; THENCE S90°00'00"W (ASSUMED BEARING) ALONG THE SOUTH LINE OF SAID NE 1/4, NE 1/4 A DISTANCE OF 489.95 FEET; THENCE N00°14'43"W A DISTANCE OF 33.00 FEET TO A POINT ON THE NORTH MARGIN OF FIFTH STREET, THE POINT OF BEGINNING; THENCE CONTINUING N00°14'43"W A DISTANCE OF 287.71 FEET TO A POINT ON THE SOUTH MARGIN OF MILITARY AVENUE; THENCE S86°21'39"E ALONG SAID SOUTH MARGIN A DISTANCE OF 457.43 FEET TO THE WEST MARGIN OF LUTHER ROAD; THENCE S00°18'03"E ALONG SAID WEST MARGIN A DISTANCE OF 238.68 FEET TO THE NORTH MARGIN OF FIFTH STREET; THENCE S00°00'00"W, ALONG SAID NORTH MARGIN A DISTANCE OF 456.62 FEET TO THE POINT OF BEGINNING, CONTAINING 115982 SQUARE FEET OR 2.65 ACRES, MORE OR LESS.

SURVEYOR'S CERTIFICATE I HEREBY CERTIFY AS THE UNDERSIGNED REGISTERED LAND SURVEYOR, THAT I HAVE SURVEYED THE TRACT OF LAND SHOWN AND DESCRIBED HEREON, AND THAT PERMANENT MARKERS HAVE BEEN FOUND OR SET ON ALL LOT CORNERS. 12/31/97 STEPHEN W. DODD, LS-503



ACKNOWLEDGEMENT STATE OF NEBRASKA ) SS COUNTY OF DODGE )

ON THIS 13th DAY OF January, A.D. 1998, BEFORE ME, A GENERAL NOTARY PUBLIC, PERSONALLY APPEARED THOMAS E. BARTELS, NANCY K. BARTELS, ABEL LIMON, JR. AND LETICIA LIMON, WHO ARE KNOWN TO ME TO BE THE IDENTICAL PERSONS WHOSE NAMES APPEAR ON THE FOREGOING DEDICATION, AND WHO HEREBY ACKNOWLEDGE THE SIGNING OF SAID INSTRUMENT TO BE THEIR VOLUNTARY ACT AND DEED.

WITNESS MY HAND AND OFFICIAL SEAL DATE LAST AFORESAID. GENERAL NOTARY PUBLIC

