

# SAWYER SECOND SUBDIVISION

FILED NOV 19 1998 7360 TO THE CITY OF FREMONT, DODGE COUNTY, NEBRASKA  
REGISTERED BY DEEDS DODGE COUNTY, NE  
LOCATED IN THE NW 1/4 NW 1/4 NW 1/4 SECTION 26, T17N, R8E, 6TH P.M.

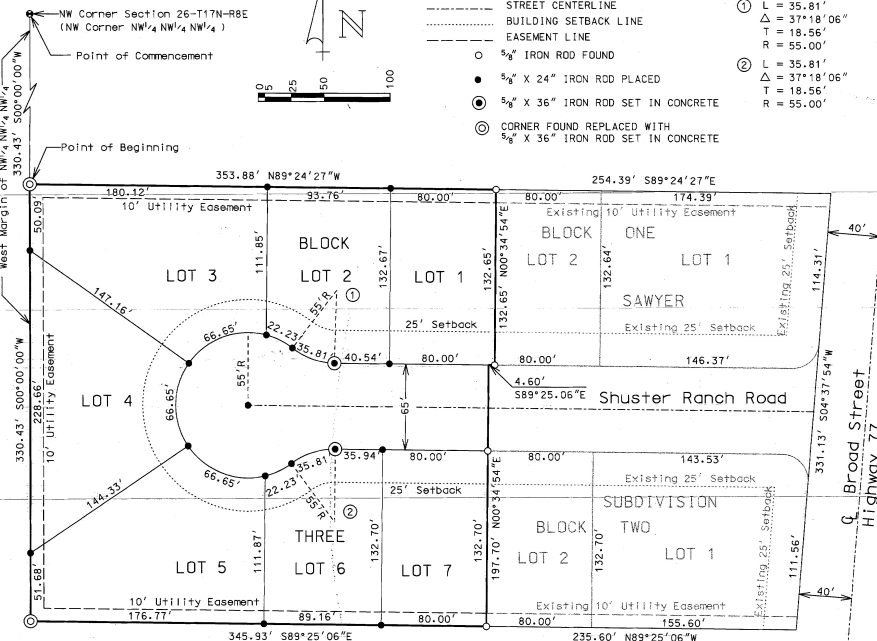
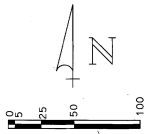
COURTNEY  
BOOK  
PAGE 3350

### LEGEND

- SUBDIVISION BOUNDARY
- LOT LINE
- STREET CENTERLINE
- - - BUILDING SETBACK LINE
- · · EASEMENT LINE
- 5/8" IRON ROD FOUND
- 5/8" X 24" IRON ROD PLACED
- ⊙ 5/8" X 36" IRON ROD SET IN CONCRETE
- ⊙ CORNER FOUND REPLACED WITH 5/8" X 36" IRON ROD SET IN CONCRETE

### P CURVE DATA

- ① L = 35.81'  
Δ = 37°18'06"  
T = 18.56'  
R = 55.00'
- ② L = 35.81'  
Δ = 37°18'06"  
T = 18.56'  
R = 55.00'



### DEDICATION

Know all men by these presents that Tom L. Sawyer and Marka L. Sawyer, being the owners of the tract of land shown and described hereon, have caused the same to be subdivided into a block, lots and street, said subdivision to be known as Sawyer Second Subdivision, the block, lots and street to be numbered and named as shown, and so hereby dedicate to the public for perpetual use, Shuster Ranch Road, at the location and to the widths shown on this plat. Said owners do also dedicate easements at the locations and to the widths shown on this plat, said dedicated easements being granted to the City of Fremont, and any public or private utility company for reciprocal use by abutting property owners for the sole purpose of construction and maintenance of utility lines and pipes and drainage facilities. No permanent building or retaining walls shall be placed in the above described easement ways, but the same may be used for gardens, shrubs, landscaping and other purposes that do not then or later interfere with the aforesaid uses or rights herein granted.

*Tom L. Sawyer*      *Marka L. Sawyer*  
Tom L. Sawyer      Marka L. Sawyer

### ACKNOWLEDGEMENT

State of Nebraska) S.S  
County of Dodge)  
On this \_\_\_\_\_ day of \_\_\_\_\_, 1998, A.D., before me, a notary public in and for said County, personally came the named Tom L. Sawyer and Marka L. Sawyer, who are personally known to me to be the identical persons whose names are affixed to the instrument, and they acknowledge the execution therefore to be their voluntary act and deed.

Witness my hand and official seal the last date aforesaid.



*Robert L. Cook*  
Notary Public

My commission expires on the 1st day of May, 2002, A.D.

### LEGAL DESCRIPTION

A tract of land located in the NW 1/4 of the NW 1/4 of the NW 1/4 of Section 26, Township 17 North, Range 8 East of the 6th P.M., Dodge County, Nebraska containing 2.65 Acres more or less and being more particularly described as follows:  
Commencing at the NW Corner of said NW 1/4 NW 1/4 NW 1/4 and going thence S00°00'00"W on an assumed bearing, along the West Margin of said NW 1/4 NW 1/4 NW 1/4 for a distance of 330.43 feet to the point of beginning; thence continuing S00°00'00"W along said West Margin for a distance of 330.43 feet to the SW Corner of said NW 1/4 NW 1/4 NW 1/4 thence S89°25'06"E along the South Margin of said NW 1/4 NW 1/4 NW 1/4 for a distance of 345.93 feet; thence N00°34'54"E for a distance of 197.70 feet; thence S89°25'06"E for a distance of 4.60 feet; thence N00°34'54"E for a distance of 132.65 feet; thence N89°24'27"W for a distance of 353.88 feet to the point of beginning.

### APPROVAL OF CITY PLANNING COMMISSION

This plat of Sawyer Second Subdivision was approved by the City Planning Commission of the City of Fremont, Nebraska this 15th day of June, 1998 A.D.

*Ed Giff*  
Chairman

I, the undersigned licensed land surveyor, do hereby certify that I have supervised the surveying of Sawyer Second Subdivision and that all bearings, distances and all other information shown is true and correct, to the best of my knowledge.

### FREMONT CITY COUNCIL ACCEPTANCE

This plat of Sawyer Second Subdivision was approved and accepted by the City Council of Fremont, Nebraska this 22nd day of June, 1998 A.D.

*Donald B. [Signature]*  
Mayor

*Kimberly [Signature]*  
City Clerk

Coen Engineers, Inc.

By *Maurin L. [Signature]*  
L.S. No. 289



PROJECT: Sawyer Second Subdivision Final Plat	
LOCATION: NW 1/4 NW 1/4 NW 1/4 of Sec 26, T17N, R8E of the 6th P.M. Fremont, Dodge County, NE	
SCALE: As Shown	DRAWN BY: NCK
DATE: May 1998	REVISED:
PREPARED BY: COEN ENGINEERS, INC.	DRAWING NUMBER: 1 of 1