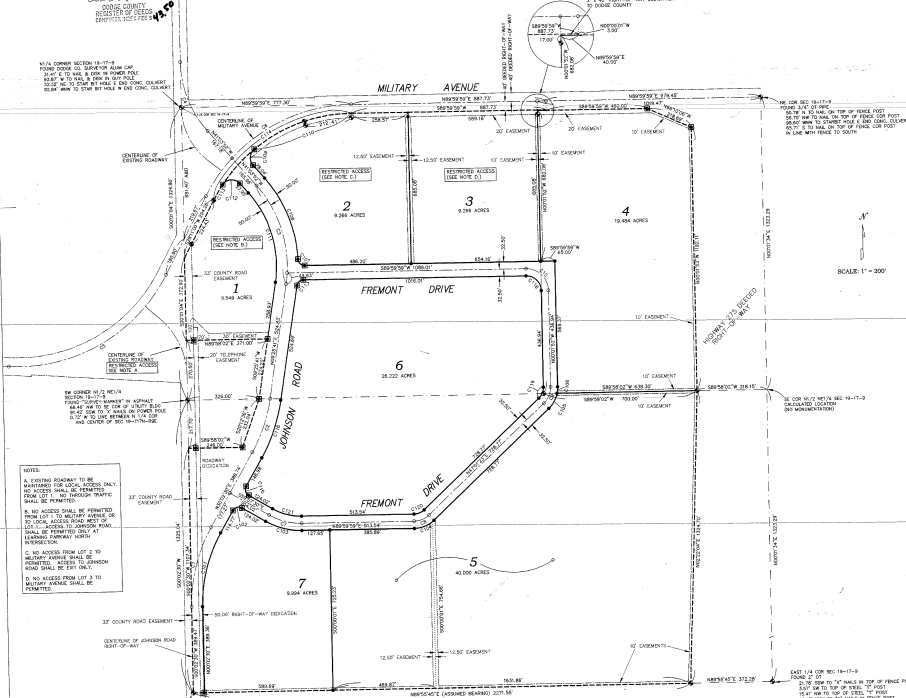


PLAT 494

FINAL PLAT OF JOHNSON PARK SUBDIVISION PART OF THE NE 1/4 OF SECTION 19-117N-R9E OF THE 6TH P.M. DODGE COUNTY, NEBRASKA



- LEGEND**
- FOUND SURVEY MONUMENTS
 - ◻ 1/2" IRON REBAR (OTHERWISE NOTED)
 - EASEMENT
 - SET 1/2" x 30" REBAR IN 4" DIAMETER CONCRETE
- NOTE:
ALL DIMENSIONS, BEARINGS AND ANGLES ARE ACTUAL UNLESS OTHERWISE NOTED.

CURVE TABLE

CHANGEPART	PC	PVI	PT	STATIONING	CURVE DATA
1	15+22.33	16+00.00	16+77.67	15+22.33 TO 16+77.67	73.00' RADIUS
2	16+77.67	17+50.00	18+22.33	16+77.67 TO 18+22.33	100.00' RADIUS
3	18+22.33	19+00.00	19+77.67	18+22.33 TO 19+77.67	150.00' RADIUS
4	19+77.67	20+50.00	21+22.33	19+77.67 TO 21+22.33	100.00' RADIUS
5	21+22.33	22+00.00	22+77.67	21+22.33 TO 22+77.67	73.00' RADIUS

DECLARATION

I, JOHN J. DODD, Surveyor, do hereby certify that the above plat is a true and correct copy of the original plat on file in my office, and that the same has been approved by the Board of Supervisors of Dodge County, Nebraska.

IN WITNESS WHEREOF, I DO HEREBY SET MY HANDS AND SEAL OF OFFICE AT FREMONT, NEBRASKA, THIS 15th DAY OF JANUARY, A.D. 2001.

John J. Dodd
Surveyor

ACKNOWLEDGMENT

STATE OF NEBRASKA)
COUNTY OF DODGE)
I, the undersigned, do hereby certify that the above plat is a true and correct copy of the original plat on file in my office, and that the same has been approved by the Board of Supervisors of Dodge County, Nebraska.

By: _____
Board of Supervisors

PLANNING COMMISSION APPROVAL

ON THIS 15th DAY OF JANUARY, A.D. 2001, THE BOARD OF SUPERVISORS OF THE CITY OF FREMONT, NEBRASKA, HAS APPROVED THE ABOVE PLAT AND THE SUBDIVISION THEREOF.

By: _____
City Council

SURVEYOR'S CERTIFICATE

I HEREBY CERTIFY THAT THE FOREGOING REPRESENTS A TRUE AND CORRECT COPY OF THE ORIGINAL PLAT ON FILE IN MY OFFICE, AND THAT THE SAME HAS BEEN APPROVED BY THE BOARD OF SUPERVISORS OF DODGE COUNTY, NEBRASKA.

John J. Dodd
Surveyor



JOHNSON PARK SUBDIVISION
FREMONT, NE. FINAL PLAT