

FILED
2002 MAY 1 3367

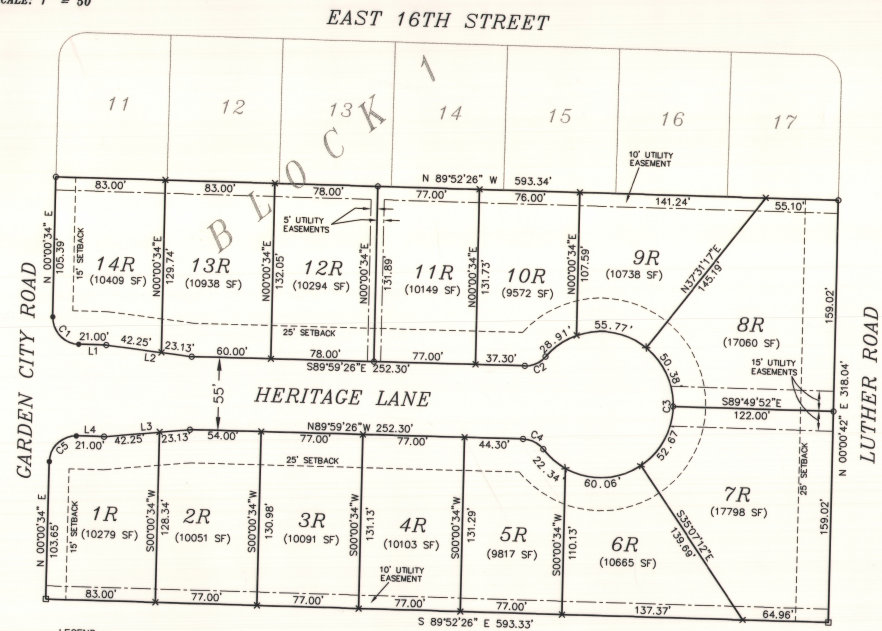
Plat # 505

2002 MAY -1 AM 10:31

Carol Jensen
DODGE COUNTY
REGISTER OF DEEDS
COMPUTER INDEX FEE \$1.00

REPLAT OF LOTS 1 THROUGH 10, BLOCK 1, HERITAGE SQUARE SUBDIVISION
FREMONT, DODGE COUNTY, NEBRASKA.

SCALE: 1" = 50'



LEGEND

- FOUND 5/8" REBAR
- FOUND 1/2" REBAR
- FOUND 1/2" REBAR SET IN CONCRETE
- x SET 3/4" X 24" REBAR
- SETBACK LINE
- - - EASEMENT LINE

CURVE TABLE

NUMBER	DELTA	RADIUS	ARC LENGTH	CH BEARING	CH LENGTH
C1	89°58'29"	20.00	31.41	N44°59'26"W	28.28
C2	50°42'24"	20.00	17.70	N64°39'22"E	17.13
C3	281°24'17"	55.00	270.13	S00°00'34"W	69.67
C4	50°42'24"	20.00	17.70	N64°38'14"W	17.13
C5	89°58'29"	20.00	31.41	S45°00'34"W	28.28

LINE TABLE

NUMBER	DIRECTION	DISTANCE
L1	S89°59'26"E	21.00'
L2	S83°50'38"E	85.38'
L3	S83°51'48"W	55.38'
L4	N89°59'26"W	21.00'

NOTE: ALL UTILITY EASEMENTS ARE EXISTING.

LEGAL DESCRIPTION
LOTS 1 THROUGH 10, BLOCK 1, HERITAGE SQUARE SUBDIVISION, FREMONT, DODGE COUNTY, NEBRASKA.

PLANNING COMMISSION APPROVAL
ON THIS 28th DAY OF March 2002, A.D. THIS REPLAT OF LOTS 1 THROUGH 10, BLOCK 1, HERITAGE SQUARE SUBDIVISION WAS APPROVED AND ACCEPTED BY THE PLANNING COMMISSION OF THE CITY OF FREMONT, DODGE COUNTY, NEBRASKA.

CITY COUNCIL ACCEPTANCE
ON THIS 26th DAY OF March 2002, A.D. THIS REPLAT OF LOTS 1 THROUGH 10, BLOCK 1, HERITAGE SQUARE SUBDIVISION WAS APPROVED AND ACCEPTED BY RESOLUTION OF THE CITY COUNCIL OF THE CITY OF FREMONT, DODGE COUNTY, NEBRASKA.

SURVEYOR'S CERTIFICATE
I HEREBY CERTIFY AS THE UNDERSIGNED REGISTERED LAND SURVEYOR, THAT I HAVE SURVEYED THE TRACT OF LAND SHOWN AND DESCRIBED HEREON, AND THAT PERMANENT MARKERS HAVE BEEN FOUND OR WILL BE SET AS DESCRIBED HEREON, ON OR BEFORE JUNE 1, 2002.



DEDICATION:
KNOW ALL MEN BY THESE PRESENTS, THAT ENSPAHR CONSTRUCTION, INC., DENNIS D. ENSPAHR, PRESIDENT; OWNER AND PROPRIETOR OF THE TRACT OF LAND SHOWN AND DESCRIBED HEREON, HAS CAUSED THE SAME TO BE DIVIDED INTO LOTS AND BLOCKS, SAID SUBDIVISION TO BE KNOWN AS REPLAT OF LOTS 1 THROUGH 10, HERITAGE SQUARE SUBDIVISION, THE LOTS AND BLOCKS TO BE NUMBERED AS SHOWN AND APPROVES OF THE DISPOSITION OF THE PROPERTY AS SHOWN ON THIS PLAT AND DEDICATES EASEMENTS AT THE LOCATIONS AND TO THE WIDTHS SHOWN HEREON TO THE ABUTTING PROPERTY OWNERS FOR THE SOLE PURPOSE OF CONSTRUCTION AND MAINTENANCE OF UTILITY LINES AND PIPES AND DRAINAGE FACILITIES.
IN WITNESS WHEREOF, I DO HEREBY SET MY HANDS THE 22 DAY OF March 2002, A.D.
ENSPAHR CONSTRUCTION, INC.
Dennis D. Enspahr, President

ACKNOWLEDGEMENT
STATE OF NEBRASKA)
COUNTY OF DODGE)
ON THIS 22 DAY OF March 2002, A.D. BEFORE ME, A GENERAL NOTARY PUBLIC, PERSONALLY APPEARED DENNIS D. ENSPAHR, PRESIDENT OF ENSPAHR CONSTRUCTION, INC., WHO IS KNOWN TO ME TO BE THE IDENTICAL PERSON WHOSE NAME APPEARS ON THE FOREGOING DEDICATION, AND WHO HEREBY ACKNOWLEDGES THE SIGNING OF SAID INSTRUMENT TO BE HIS VOLUNTARY ACT AND DEED.
WITNESS MY HAND AND OFFICIAL SEAL DATE LAST AFORESAID.
Fullie 9/4/2002
GENERAL NOTARY PUBLIC
COMMISSION EXPIRES 9-11-05

Stephen W. Dodd
P.E. & L.S.
PH: 402-727-9907; FAX: 721-0709
208 N. Main, P.O. Box 1855
Fremont, NE 68606-1855

Dodd Engineering & Surveying

REPLAT OF LOTS 1 THROUGH 10, BLOCK 1, HERITAGE SQUARE SUBDIVISION
FREMONT, DODGE COUNTY, NE.