

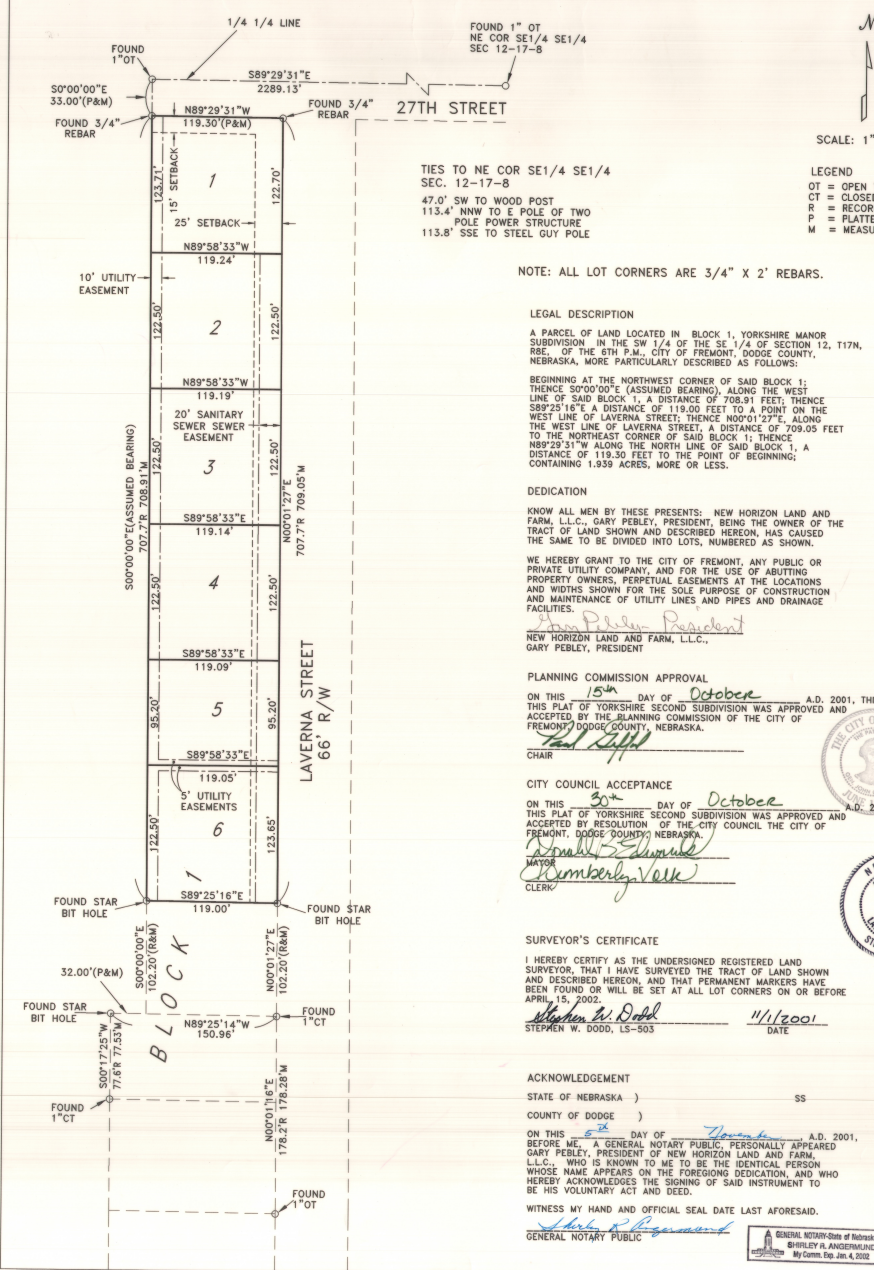
39

Plat # 507

FILED
BOOK 2002 DE. 5821
2002 AUG-2 PM 1:35
Carol Hoover
DODGE COUNTY
REGISTER OF DEEDS
COMMERCIAL DISTRICT #2

YORKSHIRE SECOND SUBDIVISION

A REPLAT OF A PORTION OF BLOCK 1, YORKSHIRE MANOR SUBDIVISION LOCATED IN THE SW 1/4 OF THE SE 1/4 OF SECTION 12, T17N, R8E OF THE 6TH P.M., CITY OF FREMONT, DODGE COUNTY, NEBRASKA



SCALE: 1" = 60'

- LEGEND
- OT = OPEN TOP PIPE
 - CT = CLOSED TOP PIPE
 - R = RECORDED DISTANCE
 - P = PLATTED DISTANCE
 - M = MEASURED DISTANCE

TIES TO NE COR SE 1/4 SE 1/4 SEC. 12-17-8
47.0' SW TO WOOD POST
113.4' NNW TO E POLE OF TWO POLE POWER STRUCTURE
113.8' SSE TO STEEL GUY POLE

NOTE: ALL LOT CORNERS ARE 3/4" X 2' REBARS.

LEGAL DESCRIPTION

A PARCEL OF LAND LOCATED IN BLOCK 1, YORKSHIRE MANOR SUBDIVISION IN THE SW 1/4 OF THE SE 1/4 OF SECTION 12, T17N, R8E, OF THE 6TH P.M., CITY OF FREMONT, DODGE COUNTY, NEBRASKA, MORE PARTICULARLY DESCRIBED AS FOLLOWS:

BEGINNING AT THE NORTHWEST CORNER OF SAID BLOCK 1; THENCE S00°00'00"E (ASSUMED BEARING), ALONG THE WEST LINE OF SAID BLOCK 1, A DISTANCE OF 708.91 FEET; THENCE S89°25'16"E A DISTANCE OF 119.00 FEET TO A POINT ON THE WEST LINE OF LAVERNA STREET; THENCE N00°01'27"E, ALONG THE WEST LINE OF LAVERNA STREET, A DISTANCE OF 709.05 FEET TO THE NORTHEAST CORNER OF SAID BLOCK 1; THENCE N89°29'31"W ALONG THE NORTH LINE OF SAID BLOCK 1, A DISTANCE OF 119.30 FEET TO THE POINT OF BEGINNING; CONTAINING 1.859 ACRES, MORE OR LESS.

DEDICATION

KNOW ALL MEN BY THESE PRESENTS: NEW HORIZON LAND AND FARM, L.L.C., GARY PEBLEY, PRESIDENT, BEING THE OWNER OF THE TRACT OF LAND SHOWN AND DESCRIBED HEREON, HAS CAUSED THE SAME TO BE DIVIDED INTO LOTS, NUMBERED AS SHOWN.

WE HEREBY GRANT TO THE CITY OF FREMONT, ANY PUBLIC OR PRIVATE UTILITY COMPANY, AND FOR THE USE OF ABUTTING PROPERTY OWNERS, PERPETUAL EASEMENTS AT THE LOCATIONS AND WIDTHS SHOWN FOR THE SOLE PURPOSE OF CONSTRUCTION AND MAINTENANCE OF UTILITY LINES AND PIPES AND DRAINAGE FACILITIES.

Gary Pebley
NEW HORIZON LAND AND FARM, L.L.C.,
GARY PEBLEY, PRESIDENT

PLANNING COMMISSION APPROVAL

ON THIS 15th DAY OF October, A.D. 2001, THIS THIS PLAT OF YORKSHIRE SECOND SUBDIVISION WAS APPROVED AND ACCEPTED BY THE PLANNING COMMISSION OF THE CITY OF FREMONT, DODGE COUNTY, NEBRASKA.

Paul Siff
CHAIR

CITY COUNCIL ACCEPTANCE

ON THIS 30th DAY OF October, A.D. 2001, THIS PLAT OF YORKSHIRE SECOND SUBDIVISION WAS APPROVED AND ACCEPTED BY RESOLUTION OF THE CITY COUNCIL OF THE CITY OF FREMONT, DODGE COUNTY, NEBRASKA.

Donald Schumaker
MAYOR
Kimberly Volk
CLERK



SURVEYOR'S CERTIFICATE

I HEREBY CERTIFY AS THE UNDERSIGNED REGISTERED LAND SURVEYOR, THAT I HAVE SURVEYED THE TRACT OF LAND SHOWN AND DESCRIBED HEREON, AND THAT PERMANENT MARKERS HAVE BEEN FOUND OR WILL BE SET AT ALL LOT CORNERS ON OR BEFORE APRIL 15, 2002.

Stephen W. Dood 11/1/2001
STEPHEN W. DOOD, LS-503 DATE

ACKNOWLEDGEMENT

STATE OF NEBRASKA)
COUNTY OF DODGE)

ON THIS 08th DAY OF November, A.D. 2001, BEFORE ME, A GENERAL NOTARY PUBLIC, PERSONALLY APPEARED GARY PEBLEY, PRESIDENT OF NEW HORIZON LAND AND FARM, L.L.C., WHO IS KNOWN TO ME TO BE THE IDENTICAL PERSON WHOSE NAME APPEARS ON THE FOREGOING DEDICATION, AND WHO HEREBY ACKNOWLEDGES THE SIGNING OF SAID INSTRUMENT TO BE HIS VOLUNTARY ACT AND DEED.

WITNESS MY HAND AND OFFICIAL SEAL DATE LAST AFORESAID.

Shirley A. Angermlund
GENERAL NOTARY PUBLIC



PH. 402-727-0007, FAX 721-0809
2001
Fremont, NE 68028-1885

Stephen W. Dood
D.D. S.
P.E. & L.S.

Dodd Engineering & Surveying

YORKSHIRE SECOND SUBDIVISION
FREMONT, NEBRASKA

FINAL PLAT