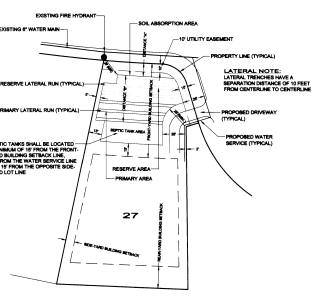


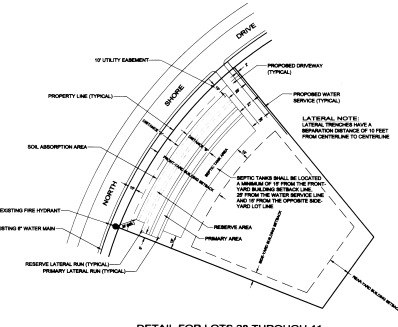
**BUILDING SETBACK NOTES:**

1. ALL SINGLE-FAMILY DWELLINGS SHALL BE LOCATED WITHIN THE BUILDING SETBACK LINES SHOWN ON THIS PLAN.
2. A SECONDARY BUILDING MAY BE LOCATED ANYWHERE WITHIN THE LOT AND MAY BE CONSTRUCTED TO EXCEED THE SETBACK DISTANCE ESTABLISHED BY THE CITY OF NORTH BEND ZONING REGULATIONS, THE RELEVANT ORDINANCES AND THE NEBRASKA DEPARTMENT OF ENVIRONMENTAL QUALITY TITLE 103 REGULATIONS.
3. ALL LATERALS SHALL BE BUILT WITHIN THE DESIGNATED ABSORPTION FIELD BOUNDARIES SHOWN ON THIS PLAN.

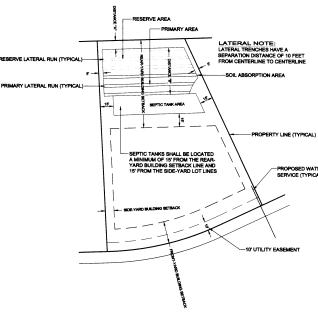
LOT NO.	27	28	29	30	31	32	33	34	35	36	37	38	39	40	41	42	43	44	45
FRONT-YARD BUILDING SETBACK	10'	10'	10'	10'	10'	10'	10'	10'	10'	10'	10'	10'	10'	10'	10'	10'	10'	10'	10'
SIDE-YARD BUILDING SETBACK	10'	10'	10'	10'	10'	10'	10'	10'	10'	10'	10'	10'	10'	10'	10'	10'	10'	10'	10'
REAR-YARD BUILDING SETBACK	10'	10'	10'	10'	10'	10'	10'	10'	10'	10'	10'	10'	10'	10'	10'	10'	10'	10'	10'
DISTANCE "A"	10'	10'	10'	10'	10'	10'	10'	10'	10'	10'	10'	10'	10'	10'	10'	10'	10'	10'	10'
DISTANCE "B"	10'	10'	10'	10'	10'	10'	10'	10'	10'	10'	10'	10'	10'	10'	10'	10'	10'	10'	10'
PRIMARY ABSORPTION AREA	800 SQ. FT.	1200 SQ. FT.	1200 SQ. FT.	800 SQ. FT.	1100 SQ. FT.	1000 SQ. FT.	800 SQ. FT.	800 SQ. FT.	700 SQ. FT.	800 SQ. FT.	1400 SQ. FT.	1400 SQ. FT.	1400 SQ. FT.	1400 SQ. FT.	800 SQ. FT.	1200 SQ. FT.	1200 SQ. FT.	1200 SQ. FT.	1400 SQ. FT.
RESERVE ABSORPTION AREA	800 SQ. FT.	1200 SQ. FT.	1200 SQ. FT.	800 SQ. FT.	1100 SQ. FT.	1000 SQ. FT.	800 SQ. FT.	800 SQ. FT.	700 SQ. FT.	800 SQ. FT.	1400 SQ. FT.	1400 SQ. FT.	1400 SQ. FT.	1400 SQ. FT.	800 SQ. FT.	1200 SQ. FT.	1200 SQ. FT.	1200 SQ. FT.	1400 SQ. FT.
MAXIMUM NUMBER OF BEDROOMS ALLOWED	4	4	4	4	4	4	4	4	4	4	4	4	4	4	4	4	4	4	4



DETAIL FOR LOT 27  
SCALE: 1" = 30'



DETAIL FOR LOTS 28 THROUGH 41  
SCALE: 1" = 30'



DETAIL FOR LOTS 42 THROUGH 45  
SCALE: 1" = 30'

2	3	4	5
NO. DATE	NO. DATE	NO. DATE	NO. DATE
1 1/2/2018	1 1/2/2018	1 1/2/2018	1 1/2/2018
1 1/2/2018	1 1/2/2018	1 1/2/2018	1 1/2/2018



**INDIVIDUAL BUILDING SETBACKS & SOIL ABSORPTION AREA LOCATION PLAN**  
 PIONEER LAKE, LOTS 27 THROUGH 45, INCLUDING  
 PART OF SECTION 7, TOWNSHIP 17 NORTH, RANGE 6 EAST OF THE SIXTH P.M., AND  
 PART OF SECTION 12, TOWNSHIP 17 NORTH, RANGE 6 EAST OF THE SIXTH P.M.,  
 DODGE COUNTY, NEBRASKA  
 Prepared by: D. Manton  
 Project No.: 2020-001  
 Drawing No.: 070004  
 Date: 12/31/2020  
 Scale: 1" = 30'  
 Sheet No.: 2 of 2

**MERIDIAN DEVELOPMENT SERVICES, INC.**  
 P.O. Box 910  
 701 South Broadway  
 Lincoln, NE 68508  
 (402) 476-3387 FAX: (402) 476-5588

PIONEER, L.L.C.  
 701 South Broadway  
 Lincoln, NE 68508