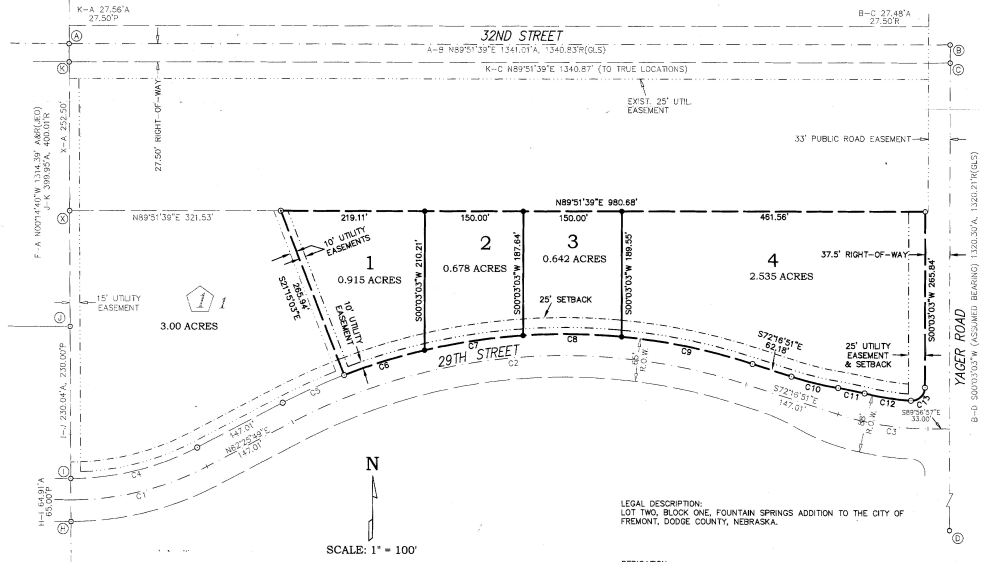


Plot
551

FILED
2007
BOOK PAGE 1232
2007 MAR -5 PM 2:39

FINAL PLAT OF
FOUNTAIN SPRINGS SECOND SUBDIVISION
FREMONT, DODGE COUNTY, NEBRASKA.

A REPLAT OF LOT TWO, BLOCK ONE, FOUNTAIN SPRINGS
ADDITION TO THE CITY OF FREMONT, NEBRASKA.



- FOUND POINT DESCRIPTIONS & CORNER TIES:
- (A) NW COR NE 1/4 SE 1/4 - 5/8" REBAR IN CENTERLINE OF CONC. PAVING N 57.85' & 99.99' TO 5/8" REBAR IN LINE WITH CORNER S 27.56' TO A 5/8" REBAR N 33.00' TO A 5/8" REBAR W 1.2' ± TO A FENCELINE NORTH
 - (B) NE COR NE 1/4 SE 1/4 - STEEL "SURVEY MARKER" DRIVEN INTO ASPHALT. NW 35.84' TO A STAR DRILL HOLE IN TOP OF W. END OF 48" CONC. PIPE NE 33.52' TO A STAR BIT HOLE IN TOP OF E. END OF 30" COP SSW 98.40' TO NAIL & DISK IN E. FACE OF POWER POLE ENC 41.37' TO CENTER OF MANHOLE
 - (C) P-K NAIL DRIVEN INTO ASPHALT, 0.03' E OF SEC. LINE
 - (D) SE COR NE 1/4 SE 1/4 - P-K NAIL DRIVEN INTO ASPHALT ENC 32.37' TO N-NAILS IN W. FACE OF POWER POLE NNE 73.73' TO NAIL IN TO CORNER POST NWW 69.50' TO N-NAILS IN THE S.E. FACE OF POWER POLE W 33.00' TO 5/8" REBAR
 - (E) SW COR NE 1/4 SE 1/4 - 5/8" REBAR N 13.45' TO 5/8" REBAR NW 22.44' TO P-K NAIL IN TREE CLUSTER NE 38.49' TO P-K NAIL IN TREE CLUSTER ESE 66.44' TO P-K NAIL IN 8" TREE
 - (H) 5/8" REBAR, 0.04N, 0.03E OF TRUE LOCATION
 - (I) 5/8" REBAR, 0.04S, 0.03E OF TRUE LOCATION
 - (J) 5/8" REBAR
 - (K) 5/8" REBAR, 0.06S OF TRUE LOCATION
 - (L) 3/4" REBAR W/PLASTIC CAP, STAMPED DODD LS-503

CURVE TABLE

#	DELTA	RADIUS	ARC LENGTH	CHORD LEN.	CHORD BRG.
C1	272°49'	450.00'	215.44'	213.36'	S78°39'44"W
C2	45°17'19"	900.00'	711.39'	693.02'	N85°04'23"E
C3	174°02'06"	450.00'	136.77'	138.22'	S81°08'54"E
C4	127°28'19"	417.50'	199.94'	198.03'	N76°09'59"E
C5	06°19'08"	932.50'	102.84'	102.79'	N83°35'23"E
C6	07°53'32"	932.50'	128.45'	128.34'	N72°41'43"E
C7	09°20'06"	932.50'	151.93'	151.76'	N61°11'32"E
C8	09°13'37"	932.50'	150.17'	150.01'	S89°24'36"E
C9	12°30'56"	932.50'	203.70'	203.29'	S78°32'20"E
C10	06°37'14"	486.00'	73.12'	73.05'	S73°35'29"E
C11	04°34'34"	514.00'	41.05'	41.04'	S78°38'48"E
C12	11°00'30"	408.50'	71.36'	71.27'	S81°19'46"E
C13	63°36'58"	20.00'	32.68'	28.16'	N46°51'51"E

- LEGEND
- A ACTUAL DISTANCE (O.S.) AS RECORDED BY GLS SURVEYING
 - P PLATTED DISTANCE (L.S.) AS RECORDED BY JEO CONSULTING GROUP
 - R RECORD DISTANCE
 - S SECTION LINE OR CENTERLINE
 - E EXISTING EASEMENT LINE
 - PROPOSED EASEMENT LINE
 - PERIMETER OF PLAT
 - R.O.M. RIGHT OF WAY
 - FOUND POINT W/ LETTER REFERENCE
 - SET POINT (3/4" X 24" REBAR WITH S.W. DODD LS-503 CAP)
 - 3/4" X 24" REBAR WITH S.W. DODD LS-503 CAP UNLESS OTHERWISE NOTED
 - 1 FOUNTAIN SPRINGS BLOCK NUMBER/LOT NUMBER
 - 1 FOUNTAIN SPRINGS SECOND BLOCK NUMBER/LOT NUMBER

LEGAL DESCRIPTION:
LOT TWO, BLOCK ONE, FOUNTAIN SPRINGS ADDITION TO THE CITY OF FREMONT, DODGE COUNTY, NEBRASKA.

DEDICATION:
KNOW ALL MEN BY THESE PRESENTS, THAT EASTWINE DEVELOPMENT LLC, JAMES RISKOWSKI, PRESIDENT, OWNER AND PROPRIETOR OF THE TRACT OF LAND SHOWN AND DESCRIBED HEREON, HAS CAUSED THE SAME TO BE DIVIDED INTO LOTS AND BLOCK SAID SUBDIVISION TO BE KNOWN AS FOUNTAIN SPRINGS SECOND SUBDIVISION, THE LOTS AND BLOCK TO BE NUMBERED AS SHOWN AND APPROVES OF THE DISPOSITION OF THE PROPERTY AS SHOWN ON THIS PLAT AND HEREBY ALSO GRANTS PERPETUAL EASEMENTS AT THE LOCATIONS AND TO THE WIDTHS SHOWN HEREON TO THE CITY OF FREMONT, ANY PUBLIC OR PRIVATE UTILITY COMPANY, AND FOR THE USE OF ABUTTING PROPERTY OWNERS, FOR THE SOLE PURPOSE OF CONSTRUCTION AND MAINTENANCE OF UTILITY LINES AND PIPES AND DRAINAGE FACILITIES; NO PERMANENT BUILDING OR RETAINING WALL SHALL BE PLACED IN THE ABOVE DESCRIBED EASEMENT WAYS; BUT THE SAME MAY BE USED FOR PARKING LOTS, LANDSCAPING AND OTHER PURPOSES THAT DO NOT INHIBIT OR LATER INTERFERE WITH THE AFORESAID USES OR RIGHTS HEREBY GRANTED.

IN WITNESS WHEREOF, I DO HEREBY SET MY HANDS THE
27th DAY OF March, 2007, A.D.

James Riskowski
JAMES RISKOWSKI, PRESIDENT
FOR: EASTWINE DEVELOPMENT LLC

ACKNOWLEDGMENT

STATE OF NEBRASKA)
COUNTY OF DODGE) SS

ON THIS 27th DAY OF March, A.D. 2007, BEFORE ME, A GENERAL NOTARY PUBLIC, PERSONALLY APPEARED JAMES RISKOWSKI, PRESIDENT OF EASTWINE DEVELOPMENT LLC, WHO IS KNOWN TO ME TO BE THE IDENTICAL PERSON, WHOSE NAME APPEARS ON THE FOREGOING DEDICATION, AND WHO HEREBY ACKNOWLEDGES THE SIGNING OF SAID INSTRUMENT TO BE HIS VOLUNTARY ACT AND DEED.

WITNESS MY HAND AND OFFICIAL SEAL DATE LAST FORESAID.

Stephen W. Dodd
GENERAL NOTARY PUBLIC
COMMISSION EXPIRES July 30, 2010

PLANNING COMMISSION APPROVAL

ON THIS 19th DAY OF February, A.D. 2007, THIS PLAT OF FOUNTAIN SPRINGS SECOND SUBDIVISION WAS APPROVED AND ACCEPTED BY THE PLANNING COMMISSION OF THE CITY OF FREMONT, DODGE COUNTY, NEBRASKA.

CHAIR

CITY COUNCIL ACCEPTANCE

ON THIS 27th DAY OF February, A.D. 2007, THIS PLAT OF FOUNTAIN SPRINGS SECOND SUBDIVISION WAS APPROVED AND ACCEPTED BY RESOLUTION OF THE CITY COUNCIL OF THE CITY OF FREMONT, DODGE COUNTY, NEBRASKA.

MAYOR

SURVEYOR'S CERTIFICATE

I HEREBY CERTIFY AS THE UNDERSIGNED REGISTERED LAND SURVEYOR, THAT I HAVE SURVEYED THE TRACT OF LAND SHOWN AND DESCRIBED HEREON, AND THAT PERMANENT MARKERS HAVE BEEN FOUND OR WILL BE SET AS DESCRIBED HEREON, WITHIN 90 DAYS OF THE FILING OF THIS PLAT AT THE OFFICE OF THE COUNTY CLERK OF DODGE COUNTY, NEBRASKA.

STEPHEN W. DODD: LS-503

DATE: 3/27/2007



Plat 551-272-9667 FAX 721-0809
402 North D St., P.O. Box 1855
Fremont, NE 68020-1855

Stephen W. Dodd
LS-503

Dodd Engineering & Surveying LLC

FOUNTAIN SPRINGS SECOND SUBDIVISION
FREMONT, DODGE COUNTY, NEBRASKA
FINAL PLAT