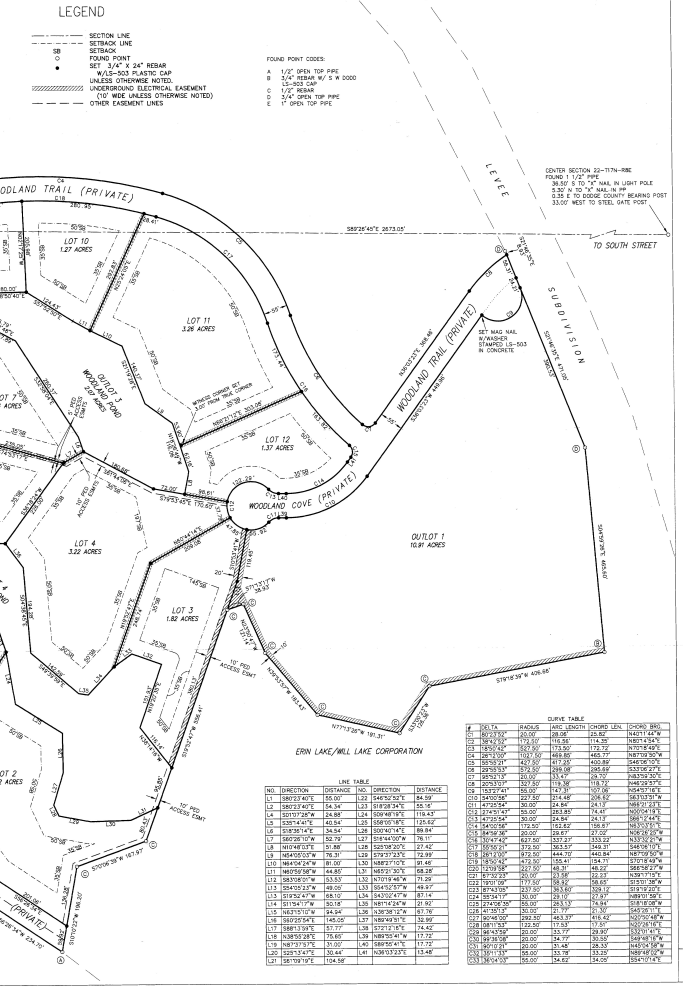


Plot # 553

LEGEND
SECTION LINE
SETBACK LINE
SETBACK

FOUND POINT CODES
A 1/2" OPEN TOP PIPE
B 1/4" REBAR W/ 5" WOOD

NA COR SECTION 22-77N-R6E
TOWNSHIP 22 NORTH, RANGE 6 EAST OF THE 6TH
PRINCIPAL MERIDIAN, DOUGLAS COUNTY, NEBRASKA



2245
3001.0000
3001.0000
3001.0000

FINAL PLAT FOR
WOODLAND LAKES SUBDIVISION
A PLANNED PRIVATE RURAL SUBDIVISION

LEGAL DESCRIPTION
A PARCEL OF LAND LOCATED IN THE SW 1/4 AND THE NW 1/4 OF
SECTION 22, TOWNSHIP 22 NORTH, RANGE 6 EAST OF THE 6TH
PRINCIPAL MERIDIAN, DOUGLAS COUNTY, NEBRASKA.

ACKNOWLEDGMENT
STATE OF NEBRASKA )
COUNTY OF DOUGLAS )
I, the undersigned, being the duly qualified and authorized
attorney-in-fact of the above-named subdivision,

Table with 2 columns: Lot Number and Area (Acres). Lists lots 2 through 12 with their respective acreages.

Table with 2 columns: Curve Data and Area (Acres). Lists various curve data points and their associated areas.

NOTES
1. WOODLAND LAKES IS A PLANNED DEVELOPMENT. THE DEVELOPMENT
PLAN HAS BEEN APPROVED BY THE CITY OF PEARSON, AND IS FILED
WITH THE CITY CLERK'S OFFICE.