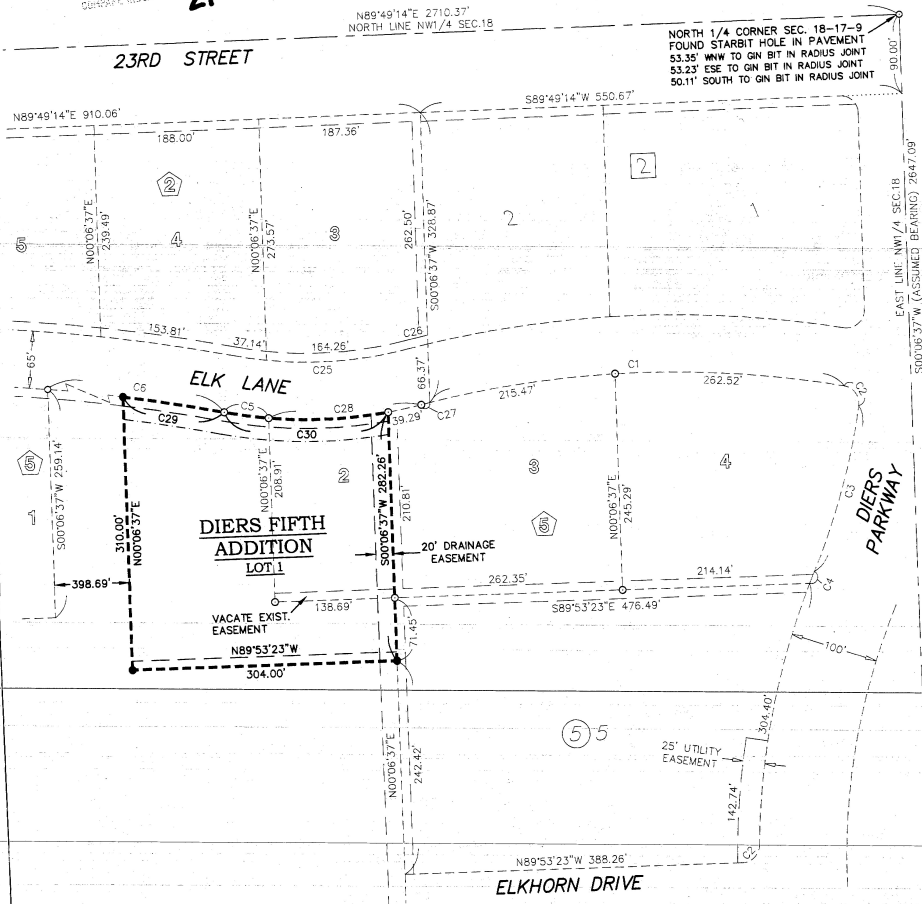


Plat 557

DIERS FIFTH ADDITION TO THE CITY OF FREMONT, NEBRASKA

LOT 2, BLOCK 5, DIERS THIRD ADDITION TO THE CITY OF FREMONT AND PART OF THE NE 1/4 NW 1/4 OF SECTION 18, T17N, R9E OF THE 6TH P.M., ALL IN DODGE COUNTY, NEBRASKA.



SCALE: 1" = 100'

LEGEND

- FOUND CORNER (3/4" X 24" REBAR W/PLASTIC CAP STAMPED LS 503 UNLESS OTHERWISE NOTED)
- SET CORNER (3/4" X 24" REBAR W/PLASTIC CAP STAMPED LS 503)
- - - EXISTING LOT LINE
- NEW LOT LINE
- - - SECTION LINE
- - - SETBACK LINE
- - - EASEMENT LINE

- ③ 1 DIERS SECOND ADDITION BLOCK NUMBER / LOT NUMBER
- ② 3 DIERS THIRD ADDITION BLOCK NUMBER / LOT NUMBER
- ② 3 DIERS FOURTH ADDITION BLOCK NUMBER / LOT NUMBER
- C29 CURVE NUMBERS
- C27 CURVE NUMBERS FROM PREVIOUS PLATS (SEE APPROPRIATE PLAT FOR DETAILS)

#	DELTA	RADIUS	ARC LENGTH	CHORD LENGTH	CHORD BEARING
C29	03°24'24"	1967.50	116.98	116.96	S79°24'27"E
C30	20°27'18"	532.50	190.11	189.10	S87°55'54"E
C1	23°21'27"	1172.50	477.99	474.69	N89°17'56"E
C5	05°29'17"	532.50	51.01	50.99	N80°26'54"W
C6	15°03'09"	1967.50	516.89	515.41	N85°13'50"W
C27	09°30'53"	1172.50	10.26	10.26	S77°51'49"W
C23	19°11'41"	532.50	178.39	177.96	S87°12'37"W

NOTE: THE FOLLOWING VALUES WERE USED UNLESS OTHERWISE NOTED:
STREET RIGHT-OF-WAY WIDTH = 65.00'
EASEMENT WIDTH = 10.00'
FRONT YARD SETBACK = 25.00'

DEDICATION

KNOW ALL MEN BY THESE PRESENTS: THAT DEER POINT CORP., A NEBRASKA CORPORATION, CHARLES H. DIERS, PRESIDENT AND WALTER C. DIERS PARTNERSHIP, A NEBRASKA PARTNERSHIP, CHARLES H. DIERS, PARTNER; OWNERS AND PROPRIETORS OF THE TRACT OF LAND SHOWN AND DESCRIBED HEREON, HAVE CAUSED THE SAME TO BE DIVIDED INTO LOTS, SAID SUBDIVISION TO BE KNOWN AS DIERS FIFTH ADDITION, THE LOTS TO BE NUMBERED AS SHOWN AND APPROVE OF THE DISPOSITION OF THE PROPERTY AS SHOWN ON THIS PLAT AND HEREBY GRANT PERPETUAL EASEMENTS AT THE LOCATIONS AND TO THE WIDTHS SHOWN HEREON TO THE CITY OF FREMONT, ANY PUBLIC OR PRIVATE UTILITY COMPANY, AND FOR THE USE OF ABUTTING PROPERTY OWNERS, FOR THE SOLE PURPOSE OF CONSTRUCTION AND MAINTENANCE OF UTILITY LINES AND PIPES AND DRAINAGE FACILITIES; NO PERMANENT BUILDING OR RETAINING WALL SHALL BE PLACED IN THE ABOVE DESCRIBED EASEMENT WAYS, BUT THE SAME MAY BE USED FOR PARKING LOTS, LANDSCAPING AND OTHER PURPOSES THAT DO NOT THEN OR LATER INTERFERE WITH THE AFORESAID USES OR RIGHTS HEREIN GRANTED.

LEGAL DESCRIPTION:

LOT 2, BLOCK 5, DIERS THIRD ADDITION TO THE CITY OF FREMONT AND PART OF THE NE 1/4 NW 1/4 OF SECTION 18, TOWNSHIP 17 NORTH, RANGE 9 EAST OF THE 6TH P.M., ALL IN DODGE COUNTY, NEBRASKA, MORE PARTICULARLY DESCRIBED AS FOLLOWS:
BEGINNING AT THE NORTHEAST CORNER OF SAID LOT 2; THENCE S00°06'37"W ALONG THE EAST LINE OF SAID LOT 2 AND THE SOUTHERLY EXTENSION THEREOF A DISTANCE OF 282.26 FEET; THENCE N89°53'23"W PARALLEL TO THE SOUTH LINE OF SAID LOT 2 A DISTANCE OF 304.00 FEET; THENCE N00°06'37"E PARALLEL TO THE WEST LINE OF ELK LANE; LOT 2 A DISTANCE OF 310.00 FEET TO A POINT ON THE SOUTHERLY LINE OF ELK LANE; THENCE EASTERLY ON SAID SOUTHERLY LINE ALONG A 1967.50 FOOT RADIUS CURVE TO THE RIGHT AN ARC DISTANCE OF 116.98 FEET THROUGH A CENTRAL ANGLE OF 03°24'24" HAVING A CHORD DIRECTION S79°24'27"E AND A CHORD LENGTH OF 116.96 FEET; THENCE CONTINUING EASTERLY ON SAID SOUTHERLY LINE ALONG A 532.50 FOOT RADIUS CURVE TO THE LEFT AN ARC DISTANCE OF 190.11 FEET THROUGH A CENTRAL ANGLE OF 20°27'18" HAVING A CHORD DIRECTION S87°55'54"E AND A CHORD LENGTH OF 189.10 FEET TO THE POINT OF BEGINNING; CONTAINING 87,384 SQUARE FEET, MORE OR LESS.

IN WITNESS WHEREOF, I DO HEREBY SET MY HANDS THE

DAY OF December 2007, A.D.
Charles H. Diers CHARLES H. DIERS, PARTNER
FOR: DEER POINT CORP. A NEBRASKA CORPORATION
Walter C. Diers WALTER C. DIERS PARTNERSHIP
A NEBRASKA PARTNERSHIP

PLANNING COMMISSION APPROVAL

ON THIS 19th DAY OF November A.D. 2007, THIS PLAT OF DIERS FIFTH ADDITION WAS APPROVED AND ACCEPTED BY THE PLANNING COMMISSION OF THE CITY OF FREMONT, DODGE COUNTY, NEBRASKA.
Tal Giff
CHAIR

CITY COUNCIL ACCEPTANCE

ON THIS 26th DAY OF December A.D. 2007, THIS PLAT OF DIERS FIFTH ADDITION WAS APPROVED AND ACCEPTED BY RESOLUTION OF THE CITY COUNCIL OF FREMONT, DODGE COUNTY, NEBRASKA.
Stephen W. Dodd MAYOR
Rumbulyck CLERK

SURVEYOR'S CERTIFICATE

I HEREBY CERTIFY AS THE UNDERSIGNED REGISTERED LAND SURVEYOR, THAT I HAVE SURVEYED THE TRACT OF LAND SHOWN AND DESCRIBED HEREON, AND THAT PERMANENT MARKERS HAVE BEEN FOUND OR WILL BE SET AS DESCRIBED HEREON, WITHIN 60 DAYS OF THE FILING OF THIS PLAT AT THE DODGE COUNTY REGISTER OF DEEDS OFFICE.
Stephen W. Dodd
STEPHEN W. DODD, LS-503
12/17/2007
DATE



DIERS FIFTH ADDITION
TO THE CITY OF FREMONT, NEBRASKA.

FINAL PLAT

Ph. 402-727-9067, FAX 721-0509
P.O. Box 1865
Fremont, Ne 68026-1865

Stephen W. Dodd
P.E. & L.S.

Dodd Engineering & Surveying LLC