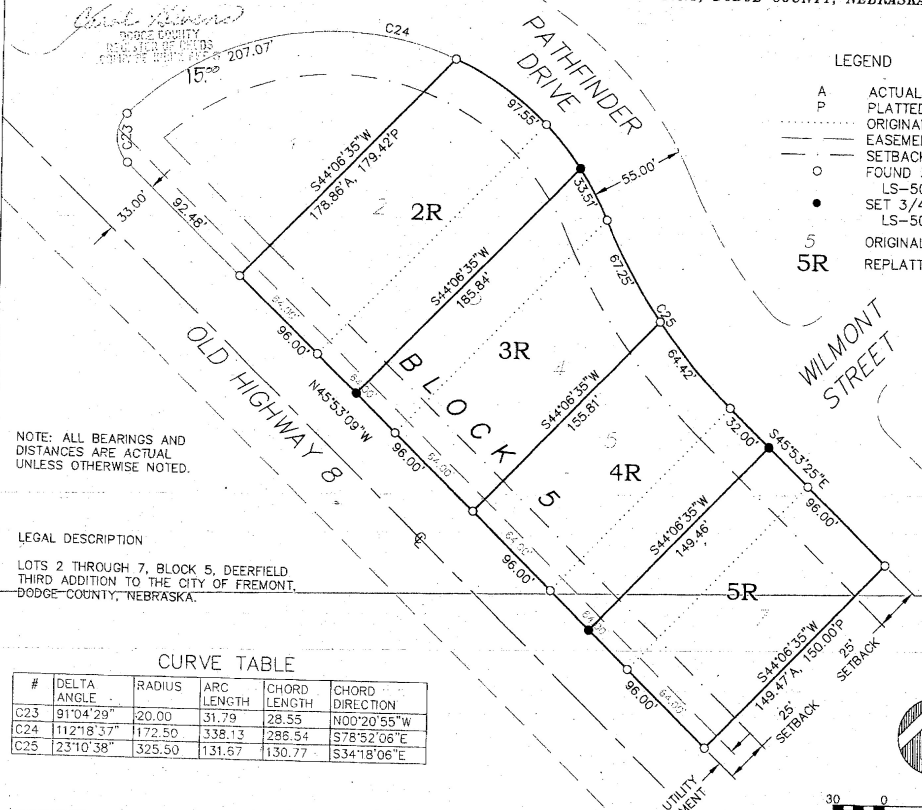


BOOK 205 PAGE 2385 Plat # 567
2010 MAY 20 - PM 3:44

REPLAT OF LOTS 2 THROUGH 7, BLOCK 5
DEERFIELD THIRD ADDITION
FREMONT, DODGE COUNTY, NEBRASKA.



- LEGEND
- A ACTUAL DISTANCE
 - P PLATTED DISTANCE
 - ORIGINAL LOTLINE REMOVED
 - - - EASEMENT
 - SETBACK
 - FOUND 3/4" REBAR W/ LS-503 CAP
 - SET 3/4" REBAR W/ LS-503 CAP
 - 5 ORIGINAL LOT NUMBER
 - 5R REPLATTED LOT NUMBER

NOTE: ALL BEARINGS AND DISTANCES ARE ACTUAL UNLESS OTHERWISE NOTED.

LEGAL DESCRIPTION

LOTS 2 THROUGH 7, BLOCK 5, DEERFIELD THIRD ADDITION TO THE CITY OF FREMONT, DODGE COUNTY, NEBRASKA.

CURVE TABLE

#	DELTA ANGLE	RADIUS	ARC LENGTH	CHORD LENGTH	CHORD DIRECTION
C23	91°04'29"	20.00	31.79	28.55	N00°20'55"W
C24	112°18'37"	172.50	338.13	288.54	S78°52'06"E
C25	23°10'38"	325.50	131.67	130.77	S34°18'06"E



Scale 1" = 60'

DEDICATION

KNOW ALL MEN BY THESE PRESENTS: THAT CHRISTENSEN LIMITED PARTNERSHIP, THOMAS CHRISTENSEN, GENERAL PARTNER; OWNER AND PROPRIETOR OF THE TRACT OF LAND SHOWN AND DESCRIBED HEREON, HAS CAUSED THE SAME TO BE DIVIDED INTO LOTS, SAID SUBDIVISION TO BE KNOWN AS "REPLAT OF LOTS 2 THROUGH 7, BLOCK 5, DEERFIELD THIRD ADDITION". THE LOTS TO BE NUMBERED AS SHOWN AND WE APPROVE THE DISPOSITION OF THE PROPERTY AS SHOWN ON THIS PLAT.

PLANNING COMMISSION APPROVAL

ON THIS 19th DAY OF April A.D. 2010, THIS REPLAT OF LOTS 2 THROUGH 7, BLOCK 5, DEERFIELD THIRD ADDITION WAS APPROVED AND ACCEPTED BY THE PLANNING COMMISSION OF THE CITY OF FREMONT, DODGE COUNTY, NEBRASKA.

IN WITNESS WHEREOF, I DO HEREBY SET MY HANDS THE

17th DAY OF May, 2010, A.D.

Thomas Christensen, General Partner
THOMAS CHRISTENSEN, GENERAL PARTNER
FOR: CHRISTENSEN LIMITED PARTNERSHIP

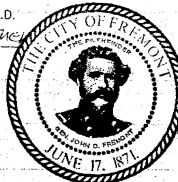
CHAIR

CITY COUNCIL ACCEPTANCE

ON THIS 27th DAY OF April A.D. 2010, THIS REPLAT OF LOTS 2 THROUGH 7, BLOCK 5, DEERFIELD THIRD ADDITION WAS APPROVED AND ACCEPTED BY RESOLUTION OF THE CITY COUNCIL THE CITY OF FREMONT, DODGE COUNTY, NEBRASKA.

MAYOR

CLERK



ACKNOWLEDGMENT

STATE OF NEBRASKA)

COUNTY OF DODGE)

ON THIS 17th DAY OF May A.D. 2010, BEFORE ME, A GENERAL NOTARY PUBLIC, PERSONALLY APPEARED THOMAS CHRISTENSEN, GENERAL PARTNER OF CHRISTENSEN LIMITED PARTNERSHIP, WHO IS KNOWN TO ME TO BE THE IDENTICAL PERSON WHOSE NAME APPEARS ON THE FOREGOING DEDICATION, AND WHO HEREBY ACKNOWLEDGES THE SIGNING OF SAID INSTRUMENT TO BE HIS VOLUNTARY ACT AND DEED.

WITNESS MY HAND AND OFFICIAL SEAL DATE LAST AFORESAID.

Gloria J. Byers
GENERAL NOTARY PUBLIC

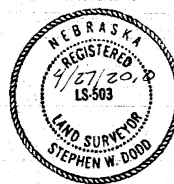
COMMISSION EXPIRES 9-26-2012



SURVEYOR'S CERTIFICATE

I HEREBY CERTIFY AS THE UNDERSIGNED REGISTERED LAND SURVEYOR, THAT I HAVE SURVEYED THE TRACT OF LAND SHOWN AND DESCRIBED HEREON, AND THAT PERMANENT MARKERS HAVE BEEN FOUND OR WILL BE SET AS DESCRIBED HEREON, WITHIN 60 DAYS OF FILING OF THIS PLAT IN THE DODGE COUNTY REGISTER OF DEEDS OFFICE.

Stephen W. Dodd
STEPHEN W. DODD, LS-503



Dodd Engineering & Surveying LLC

Stephen W. Dodd
P.E. & L.S.

Ph. 402-727-9067, FAX 721-0509
402 North D St., P.O. Box 1855
Fremont, NE 68026-1855