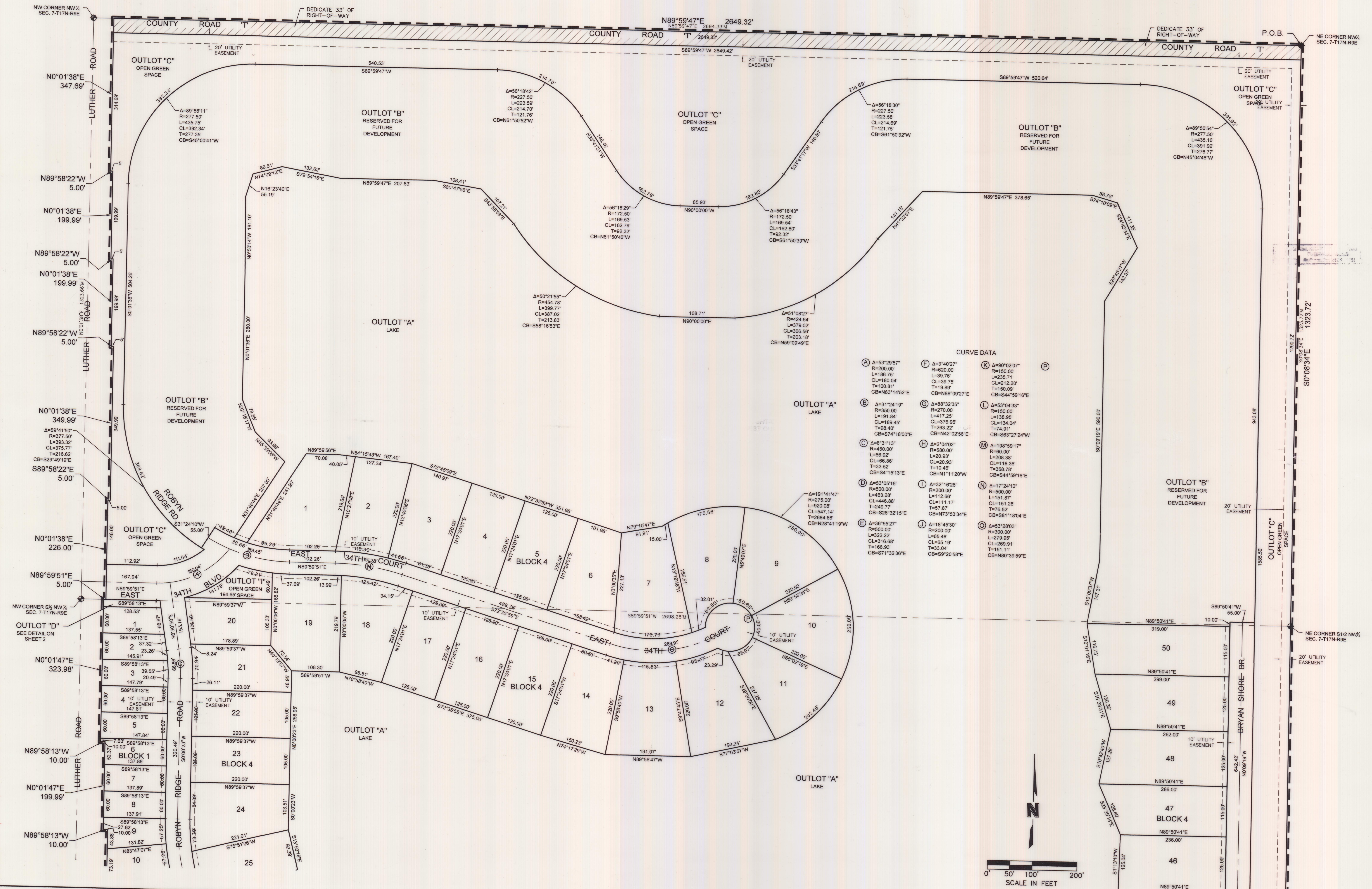


DWG: F:\Projects\20060565\SRV\MasterXrefs\Final\_Plat\Drawings\006-0565\_FPLDA.dwg  
 DATE: Oct 31, 2013 2:25pm  
 USER: m.johnson  
 XREFS: MICHAEL\_JOHNSON\_LS\_NE



**MOLSSON ASSOCIATES**  
 1111 Lincoln Mall, Suite 111  
 P.O. Box 8408  
 Lincoln, NE 68501-4608  
 TEL: 402.474.6311  
 FAX: 402.474.5160  
 www.molssonassociates.com

REV. NO.	DATE	REVISIONS DESCRIPTION

FINAL PLAT  
 RITZ LAKE ADDITION  
 FREMONT, NEBRASKA  
 2013

drawn by: \_\_\_\_\_ MRJ  
 checked by: \_\_\_\_\_ SWJ  
 approved by: \_\_\_\_\_ TL  
 QA/QC by: \_\_\_\_\_ TL  
 project no.: 006-0565  
 drawing no.: ABC.DWG  
 date: OCTOBER 24TH, 2013

SHEET  
 3 of 3



